

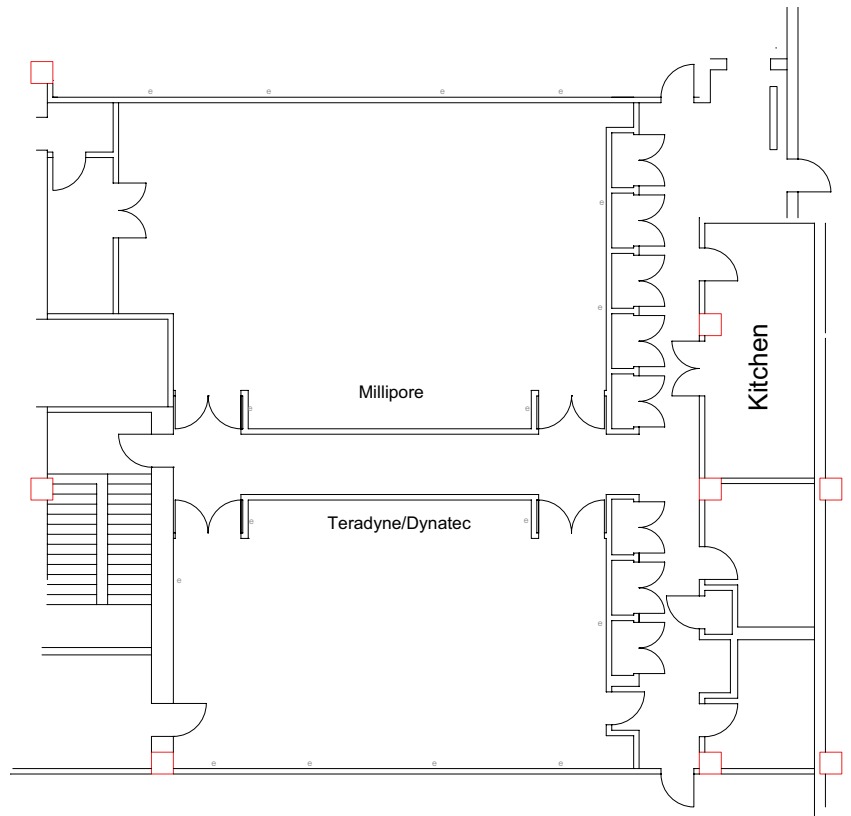
d'Arbeloff Suite

With a distinctive configuration that lends itself equally to efficient meetings or intimate evening events, this suite can be kept open as a single space or divided into two rooms with flexible setup options. Located in a secluded area off the Museum's mezzanine level, it affords a sense of privacy as well as a separate entrance to the Mugar Omni Theater. An exterior patio, ideal for meeting breaks or evening cocktails, offers fresh air and views of the Esplanade and the city of Boston.



Availability

Available days and evenings
 Room dimensions: Millipore Room 39' by 29' and Teradyne/Dynatech Room 39' x 23'
 Various room layouts are available, please call the Event & Conference Services Department for further information



Capacity

Seating Options

	Millipore Room	Teradyne/Dynatech
Theater style	80	70
Classroom style	60-80	44-60
U-shape	32	32
Hollow rectangle	40	40
Plated meal and full seating	80 (70 with podium)	60 (50 with Podium)
Buffet stations and full seating	70 (60 with podium)	50 (40 with Podium)

Reception 135 in entire suite (both rooms) with scattered cocktail tables and seating.